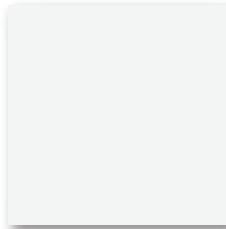




Your Roof. For Life.™

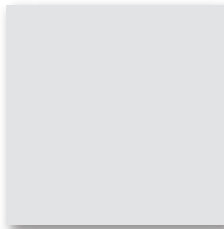
45 Year and Lifetime Warranty SMP* Paint Colors

(See reverse for availability by product.)



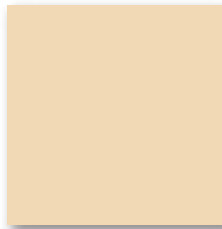
Arctic White

TSR† = 63%



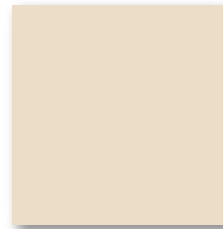
White

TSR = 46%



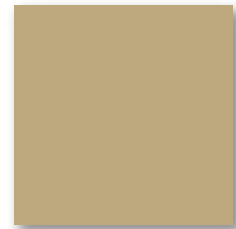
Ivory

TSR = 58%



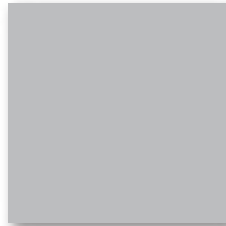
Light Stone

TSR = 51%



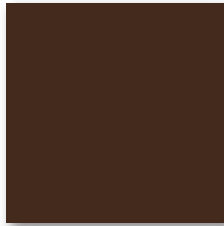
Sahara Tan

TSR = 36%



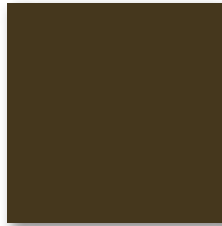
Pearl Gray

TSR = 35%



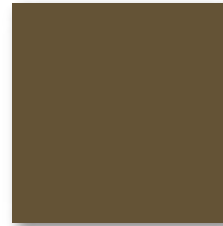
Cocoa Brown

TSR = 29%



Burnished Slate

TSR = 32%



Light Brown

TSR = 36%



Clay

TSR = 32%



Charcoal Gray

TSR = 31%



Black

TSR = 25%



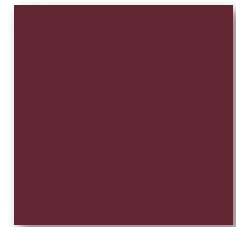
Patriot Red

TSR = 36%



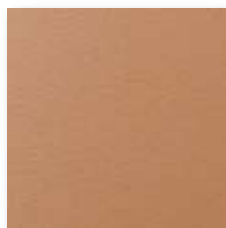
Terracotta Red

TSR = 32%



Burgundy

TSR = 25%



Copper Metallic‡

TSR = 46%



Gallery Blue

TSR = 25%



Royal Blue

TSR = 31%



Evergreen

TSR = 26%



Marine Green

TSR = 30%

Non-Painted



Acrylic Coated Galvalume

TSR = 55%



Denotes Energy Star™ certified high reflectance color which can reduce cooling costs.



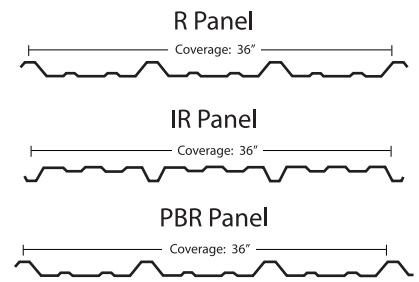
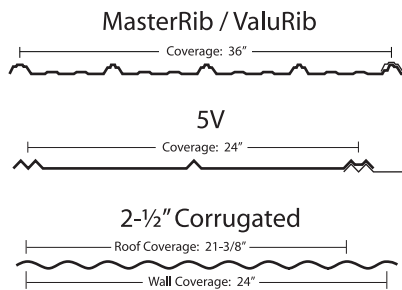
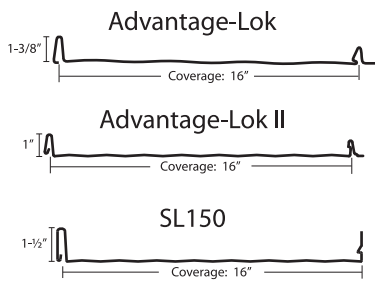
Union utilizes the most advanced Siliconized Modified Polyester paint system in the industry, based on Akzo Nobel's Ceram-A-Star 1050 technology.

NOTE: Colors shown have been matched as accurately as possible to actual finish. For exact color match, please request a metal color sample. Availability of colors and materials is subject to change. Most panels available are available in bare galvanized or bare galvalume.

† TSR = Total Solar Reflectance. An Energy Star certified color must meet the following TSR requirements: 25% initial, 15% after 3 years of exposure testing.

‡ Premium color. To ensure proper color match, orders for metallic colors should be placed so that they come from the same batch.

(888) MTL-ROOF (685-7663) • www.unionmetalroofing.com



PANEL	GAUGE	Arctic White	Black	Burgundy	Burnished Slate	Charcoal Gray	Clay	Cocoa Brown	Copper Metallic	Evergreen	Gallery Blue	Ivory	Light Brown	Light Stone	Marine Green	Patriot Red	Pearl Gray	Royal Blue	Sahara Tan	Terracotta Red	White	Acrylic Coated Galvalume	
		Advantage-Lok	26	•	•	•	•	•	•	•	•	•	•	•	•	•	•	•	•	•	•	•	•
Advantage-Lok II	26	•	•	•	•	•	•	•	•	•	•	•	•	•	•	•	•	•	•	•	•	•	•
SL150	26	•	•	•	•	•	•	•	•	•	•	•	•	•	•	•	•	•	•	•	•	•	•
MasterRib	29	•	•	•	•	•	•	•	•	•	•	•	•	•	•	•	•	•	•	•	•	•	•
MasterRib	26	•	•	•	•	•	•	•	•	•	•	•	•	•	•	•	•	•	•	•	•	•	•
ValuRib*	29				•			•		•		•				•		•		•		•	
5V	29									•										•		•	
5V	26	•			•					•	•				•	•			•			•	
2-1/2" Corrugated	29									•										•	•	•	
2-1/2" Corrugated	26	•			•					•	•				•	•			•			•	
R Panel	26	•		•	•	•		•		•	•	•		•	•	•	•	•	•	•	•	•	•
IR Panel	26	•		•	•	•		•	•	•	•	•		•	•	•	•	•	•	•	•	•	•
PBR Panel	26				•	•		•		•			•	•		•		•		•	•	•	•

* ValuRib colors are not Energy Star certified

PERFORMANCE DATA

COLOR	INITIAL SOLAR REFLECTANCE	3 YR. TOTAL SOLAR REFLECTANCE	INITIAL THERMAL EMITTANCE	SOLAR REFLECTANCE INDEX
Arctic White	0.65	0.63	0.87	78
Black	0.25	0.25	0.85	24
Burgundy	0.25	0.25	0.87	24
Burnished Slate	0.31	0.32	0.88	32
Charcoal Gray	0.30	0.31	0.88	31
Clay	0.33	0.32	0.87	35
Cocoa Brown	0.28	0.29	0.89	29
Copper Metallic	0.46	0.46	0.86	52
Evergreen	0.26	0.26	0.88	26
Gallery Blue	0.25	0.25	0.87	24
Ivory	0.60	0.58	0.87	71
Light Brown	0.35	0.36	0.88	38
Light Stone	0.52	0.51	0.87	60
Marine Green	0.30	0.30	0.87	31
Patriot Red	0.35	0.36	0.88	38
Pearl Gray	0.37	0.35	0.87	40
Royal Blue	0.30	0.31	0.87	31
Sahara Tan	0.36	0.36	0.87	39
Terracotta Red	0.32	0.32	0.87	33
White	0.56	0.46	0.87	66
Acrylic Coated Galvalume	0.67	0.55	0.14	56

ENERGY STAR Requirements

Initial Solar Reflectivity
 Steep Slope Roofs (>2:12) ≥ 0.25
 Low Slope Roofs (≤2:12) ≥ 0.65
 3 Year Solar Reflectivity
 Steep Slope Roofs (>2:12) = 0.15
 Low Slope Roofs (≤2:12) = 0.50

LEED 2.2 Requirements

Solar Reflectance Index (SRI)
 Steep Slope Roofs = ≥ 29
 Low Slope Roofs = ≥ 78

PLANT LOCATIONS

Corporate Headquarters
 701 S. King St.
 Fayetteville, NC 28301
 (888) 685-7663

490 Oak Road
 Ocala, FL 34472
 (800) 331-3584

101 Lexington Ave.
 Spencer, NC 28159
 (800) 526-8156

1463 Interplex Circle
 Ceres Industrial Complex
 Vicksburg, MS 39183
 (888) 661-0577

200 Coe Rd.
 Anderson, SC 29624
 (800) 544-5169

1801 West High Street
 Piqua, OH 45356
 (877) 615-9812

3365 US Hwy 41 South
 Tifton, GA 31794
 (800) 962-9131

600 N. Sara Road
 Suite B
 Yukon, OK 73099
 (866) 373-5286

12435 James Madison Hwy
 Orange, VA 22690
 (800) 762-6785

1019 Underwood Rd.
 Olyphant, PA 18447
 (866) 695-6455